

## FROM ASIA TO NEW ZEALAND



MV TASMAN CAMPAIGNER sails from Singapore via New Caledonia and the Fiji Islands to New Zealand. The return passage leads via Indonesia and Thailand, sometimes the vessel will also call Vietnam and/or Hong Kong. The following passenger services are offered: ex Asia from Singapore to Auckland and ex New Zealand from Tauranga to Singapore. Roundtrips can only be booked ex/to Singapore and Tauranga.



### MV TASMAN CAMPAIGNER

<b>Christening Name:</b>	<b>Robert Rickmers</b>	<b>Type of vessel:</b>	<b>Container vessel</b>
<b>Flag *:</b>	<b>Marshall Islands</b>	<b>Captain*:</b>	<b>International</b>
<b>Crew *:</b>	<b>Asian</b>	<b>Language:</b>	<b>English</b>
<b>TDW:</b>	<b>22984 metric tons</b>	<b>Length:</b>	<b>172,36 m</b>
<b>Breadth:</b>	<b>25,30 m</b>	<b>Speed:</b>	<b>approx.19 knots</b>
<b>Built:</b>	<b>06/2003</b>	<b>Voltage:</b>	<b>220 V / 60 Hz</b>
<b>Electric Plugs:</b>	<b>German System</b>	<b>Currency:</b>	<b>US-Dollars</b>
<b>Sister vessels:</b>	<b>none</b>		

\*information is subject to change without prior notice!

### TRADING AREA AND PORT ROTATION

The following itinerary is subject to alterations without prior notice:

Singapore / Singapore – Noumea / New Caledonia – Lautoka / Fiji Islands - Suva / Fiji Islands – Auckland / New Zealand – New Plymouth / New Zealand - Wellington / New Zealand – Timaru / New Zealand – Tauranga / New Zealand – Hong Kong / Hong Kong – Ho Chi Minh / Vietnam - Jakarta / Indonesia - Sri Racha / Thailand – Singapore / Singapore

### PUBLIC FACILITIES ONBOARD

The ship's public areas in the superstructure are air-conditioned. Passengers may share the officer's lounge on the 1<sup>st</sup> Deck, they also share with the officers the dining room, which is also located on the 1<sup>st</sup> Deck. Deck chairs are provided. Washer and dryer are available to passengers. Towels and bed linen are also provided. The steward attends to cabin cleaning weekly. Please also note that due to special technical circumstances the vessel is subject to notable vibrations depending on cargo load condition.

## PASSENGER ACCOMMODATION

There is presently only one cabin for passengers available. This cabin is carpeted, has private facilities with shower and WC and is further equipped with TV/DVD player and a small audio unit with CD player and AM/FM radio (not short wave). Please also refer to more detailed information below.

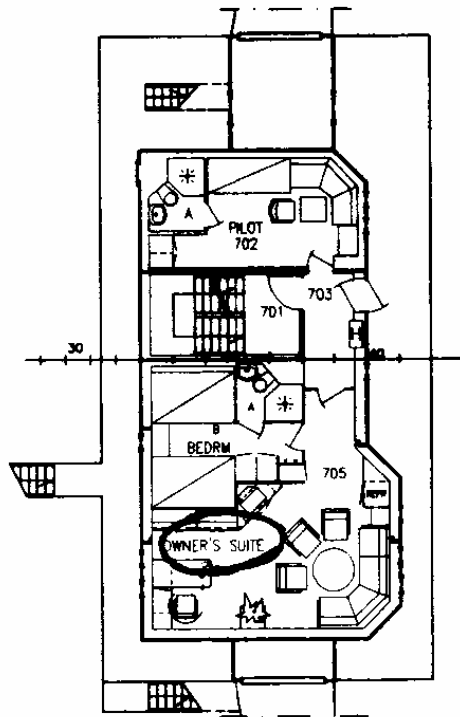
### DOUBLE CABIN "OWNER'S" – NO. 705 on the 7<sup>th</sup> Deck

Double cabin, cabin complex approx. 32 sq.m., with individual sitting and bedroom. The cabin is carpeted and has private facilities. **Sitting room:** The windows face forward and aft and have a unobstructed view. The sitting room features a sofa, a seat, two chairs, corner table and coffee table, a writing desk with chair, shelves, various cabinets and a refrigerator. **Bedroom:** The window faces aft and has a partly obstructed view by the funnel. The bedroom includes two beds, each measuring approx. 90 x 200 cm, a bedside shelf and cabinet, a mirror, a wardrobe/closet and a chest with drawers. The bathroom is accessible from the bedroom.



## DRAWING OF THE 7<sup>th</sup> DECK WITH OWNERS CABIN

### 7th SUPERSTR. DECK



### FORMALITIES

The passport should be valid **at least 9 months** counting from voyage commencement if you are planning a round trip.

Passengers are responsible for checking with respective consulates or embassies of countries called and for obtaining required documentation prior to boarding. Visa requirements may vary depending on the nationality of passengers.

**Vaccinations** are not compulsory for this voyage. Please contact your medical advisor for more information about recommended vaccinations.

The ship does not have a doctor onboard. Therefore all passengers, regardless of age, must present a clean medical certificate from their physician prior to boarding, which confirms that they are in good health and able to travel on a freighter without regular medical care. The age limit is 75.

Passengers must further be able to negotiate stairs well because accommodations and public facilities are spread over several decks and there is no elevator.

### PASSAGE FARES

Please see attached price list to find out about the fares.

MCC Marine Consulting & Contracting GmbH & Cie KG  
Neumühlen 19, D-22763 Hamburg Tel: +49-40-389177-753/ EMail: [Passage@mcc-marine.de](mailto:Passage@mcc-marine.de)

# ASIA - NEW ZEALAND



## TASMAN CAMPAIGNER

### FIXED FARES

SINGAPORE ↓ ↑ NEW ZEALAND	PORTS		Approx. voyage duration in days	Cabin and fixed fares Double Cabin "Owners"	
	Sign-on	Sign-off		per person EUR	solo use EUR
ROUNDRIPS	Singapore Tauranga	Singapore Tauranga	60	5160	6000
SEGMENT EX	Singapore	Auckland	21	1810	2100
SEGMENT EX	Tauranga	Singapore	30	2580	3000

The aforementioned voyage days are approximate figures and based on averaged values. There will be no additional charge if the actual voyage happens to be longer and no refund if the actual voyage happens to be shorter than approximate figures of voyage duration mentioned above. No other segments bookable!

Additional Cost (flat fees per person):	EUR
Port fees lumpsum:	130,00
Deviation Insurance:	145,00